



PART #

993 PACKAGES

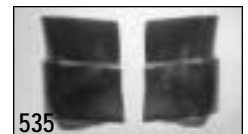
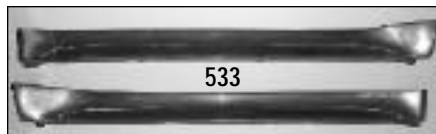
FIBERGLASS CARBON FIBER

SPECIFY 911 OR 993 CHASSIS

- 500 **993 PACKAGE** Includes fenders, quarters, 3790.95 4999.95
front bumper, rear bumper, rockers and decklid.
- 500T **993 TURBO PACKAGE** Includes fenders, 3790.95 4999.95
1 1/2" wider quarters, front and rear turbo
bumpers and turbo rockers and decklid.
- 500G **993 G-TYPE PACKAGE** 3900.95 5125.95
2" wider fenders, 3" wider qtrs and matching rear bumper,
G type front bumper, turbo rockers and decklid.
- 500E **993 EVO PACKAGE** 3900.95 5125.95
2" wider fenders, 3" wider qtrs and matching rear bumper,
EVO type front bumper, turbo rockers and decklid.



993 #59, Paul and Kim Gutowski, CO. Car prepared by On-The-Edge Performance, CO.



- 501 **993 FENDERS, pair** 900.95 1120.95
- 502 **993 WIDE BODY FENDERS+ 2", pair** 900.95 1120.95
Carbon Fiber set (Avg wt 8 lb ea).
- 505 **993 FRONT BUMPER** (Avg wt 13 lb). 750.95 1120.95
- 506 **993 TURBO FRONT BUMPER** (Avg wt 13 lb). 750.95 1120.95
- 507 **993 G TYPE FRONT BUMPER+ 2"** 790.95 1120.95
Built in splitter. This bumper can be used on stock
or wide body...PLEASE SPECIFY. (Avg wt 15 lb).
- 508 **993 G TYPE FRONT SPLITTER** Fits 507 175.95 N.A.
- 510 **EVO-1 FRONT BUMPER** 1060.95 N.A.
One piece with separate lower splitter. Fits 993 fenders with
GT-2 flares or wide body fenders. Large oil cooler ducts,
brake ramps and center tow hook.
- 511 **993 EVO-1 FRONT SPLITTER** Fits 510 240.95 N.A.
- 512 **993 EVO-2 FT BUMPER SHELL** 799.95 1240.95
No brake ducts and no oil cooler ducting.
- 513 **993 EVO-2 FRONT BUMPER with DUCTING** 1900.95 2500.95
- 525 **993 QTR PANELS, pair** (Avg wt 6 lb ea). 1225.95 1440.95
- 526 **993 TURBO QTRS+ 1 1/2", pair** 1225.95 1440.95
- 527 **993 WIDE QTRS + 3", pair** Original GTwidth 1125.95 1440.95
with light boxes, lockpost and engine compartment
mounting flange. (Avg wt 9 lb ea).
- 529 **993 ORIGINAL REAR BUMPER** 750.95 1199.95
For stock 993 quarter panels. With taillight and reflector box.
- 529A **993 REAR BUMPER** For stock 993 qtr. No light box. 699.95 1199.95
- 529B **993 TURBO REAR BUMPER** For turbo qtr. No light box. 699.95 1199.95
- 529C **993 +3" REAR BUMPER** 725.95 1199.95
Fits GTII width quarter panels. (turbo qtr + GT II flares).
No light box.
- 529D **993 GT II REAR BUMPER** Stock style rear bumper. 840.95 N.A.
GTII width. One piece with light boxes. Aprox 73 1/2".
- 531 **993 REAR DECK LID (engine lid)** 340.95 475.95
- 532 **993 ROCKERS, pair** For narrow body 200.95 N.A.
- 533 **993 CLUB SPORT ROCKERS, pr** For narrow body. 232.95 N.A.
- 534 **993 TURBO ROCKERS, pr** For Turbo or plus 3" 200.95 N.A.
- 535 **993 TURBO ROCKER EXTENSIONS, pr** 109.95 N.A.
Add on lower fender extensions allow narrow fenders
to match up with turbo rockers.
- 535A **993 GT2 ROCKER EXTENSIONS, pr** 164.95 N.A.



993 #93



993 #495



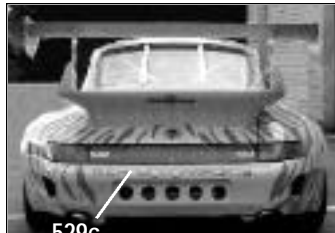
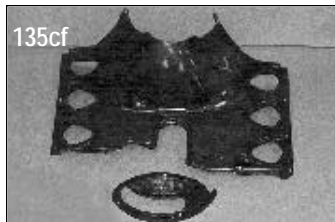
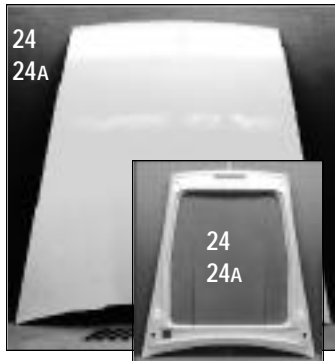
993

993 PARTS CONTINUED

536	993 GT-2 FLARE SET , 4 piece.	875.95	N.A.
	GT 2 style flares, slightly wider than Club Sport.		
537	993 CLUB SPORT FLARE SET , 6 pc	1120.95	N.A.
	For narrow body, 4 flares and 2 rockers.		
538	993 REAR FLARES , 2 piece	327.95	N.A.
	To be used on +3" qtrs, will allow 28" tall tires. Adds 1" width and 1 1/2" height.		
539	993 GT-2 TYPE SPLTR , 3 pc Fits 993 poly bumper	500.95	875.95
540	993 CARRERA SPLTR , 2 pc Fits 993 poly bumper	350.95	625.95

ADDITIONAL ITEMS

18A	911 LIGHT WEIGHT, FULL RACE DOORS , pr.	988.95	1332.95
	Requires top and bottom hinge. Full race, clears NASCAR style roll cage.		
024	911 HOOD, '74 through 993	445.95	695.95
	Includes backside of hood with reinforcement.		
024A	911 RSR HOOD SKIN, '74 through 993	380.95	625.95
	Recommended for race cars only. Must be used with hood pins.		
135	993 3.6/3.8 ENGINE SHROUD SET 2pc	270.95	370.95
135A	993 3.6/3.8 ENGINE SHROUD SET 2pc	156.95	286.95
136	993 3.6/3.8 ENGINE "SHEET METAL" 3pc	186.95	295.95
178	993 CONTACT LENSES , pair Clear	138.95	
350	993 LIGHTS DECAL , pr Full-color paper decal	39.95	

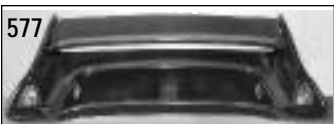
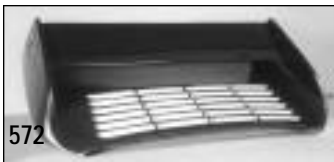


993 TAILS & WINGS

PART #

FIBERGLASS CARBON FIBER

- | | | | |
|-----|---|---------|---------|
| 570 | 993 TWIN TURBO TAIL Replaces deck lid | 875.95 | 1250.95 |
| | and clears twin intercooler. Requires top grill. | | |
| 571 | 993 CARRERA RS TAIL | 560.95 | 775.95 |
| | Attaches to your deck lid (remove electric wing first).
Requires 993 plastic grill. | | |
| 572 | 993 3.8 RSR TAIL | 1060.95 | 1570.95 |
| | One piece decklid. Six adjustments on top wing. | | |
| 573 | 993 TURBO 'S' TAIL | 1000.95 | 1370.95 |
| | One piece, removable, non-adjustable top wing.
Requires GT II top grill. | | |
| 574 | 993 CASCADE 1 TAIL | 1000.95 | 1499.95 |
| | Fits into decklid recess. Twin air inlet sides, curved
"Cup" style top wing, four way externally adjustable.
Requires 993 plastic grill. | | |
| 575 | 993 3.6 BRIDGE WING | 750.95 | 940.95 |
| | 3.6 bridge wing styling in an insert tailbase. Removable,
non adjustable top wing. Requires 993 plastic grill. | | |
| 576 | AERO KIT I TAIL | 620.95 | 790.95 |
| | Fits into decklid recess. Originally offered on the first
993 aero kit. Non-adjustable top wing. Requires 993 plastic grill. | | |
| 577 | 993 GT-2 TURBO TYPE TAIL | 1275.95 | 1870.95 |
| | Replaces your deck lid, one piece tail. Twin air inlets.
For large 993 Turbo intercooler. Six adjustments on top wing.
Requires Turbo plastic grill. | | |
| 579 | 993 CLUB SPORT WING | 1375.95 | 1999.95 |
| | Fits into decklid recess. Twin air inlets. Six adjustments
on top wing. Requires 993 plastic grill. | | |
| 580 | 993 CLUB SPORT ECONO WING | 870.95 | 1250.95 |
| | Fits into decklid recess. Styling similar to Club Sport
only a less expensive alternative. Open liner, twin air inlets.
Four adjustments on top wing. Requires 993 plastic grill. | | |



Porsche #81

993 FRONT CLIPS

PART #

FIBERGLASS CARBON FIBER

993 wide body front clips. Detachable one piece front fender, hood assembly and matching lower bumper valance. G TYPE lower valance or EVO-1 or EVO-2 style. It comes with or without headlight bucket. This is the ultimate way to equip your race car. It allows complete access to front suspension, coolers and ductwork.

- | | | | |
|-------|--|---------|------|
| 550G | 993 G-TYPE FRONT CLIP PACKAGE | 2480.95 | n.a. |
| 550EI | 993 EVO-1 FRONT CLIP PACKAGE | 2625.95 | n.a. |
| 550E2 | 993 EVO-2 FRONT CLIP PACKAGE | 2940.95 | n.a. |
| 508 | 993 G-TYPE FRONT SPLITTER Fits #553, 507 . . . | 175.95 | n.a. |
| 511 | 993 EVO-1 FRONT SPLITTER Fits #554, 510 | 240.95 | n.a. |

